

RAD-SOL-SET-24-...

Solar Interface Systems

INTERFACE

Data Sheet

© PHOENIX CONTACT - 04/2007

Features

- Pre-packaged complete Solar Interface System
- Designed to power wireless applications
- Deep-cycle, gelled electrolyte, solar battery (completely maintenance free)
- Rugged, NEMA 4 equipment enclosure
- Separate, sealed, NEMA 3R (weatherproof) battery compartment
- High-quality, solar modules
- Adjustable, side-of-pole or tower mounting hardware
- "Solar Power Rail" pre-installed
- Wiring, conduit and hardware to complete the installation

Description

The Phoenix Contact **Solar Interface Systems (SIS)** are complete stand-alone 24 V power systems, designed to support wireless applications in remote locations. Designed around a NEMA 4 enclosure, the systems include a pre-mounted DIN rail for customer added devices, with space left for devices that might need to be panel mounted. The **SIS** are sized to supply a remote wireless to process the required amount of autonomy for different regions across North America. All system components are of the highest quality. The **SIS** are built to last.

Each Phoenix Contact **Solar Interface System** comes with the appropriate solar arrays, NEMA 4 aluminum enclosure, associated brackets, solar batteries and wiring and conduit to connect the devices. Also included is a pre-wired Power Rail mounted in the NEMA 4 enclosure. The major internal enclosure components include a solar battery charger, fuses for separation and protection of system devices and persons working on the **SIS**, terminal blocks for distribution of power and a DC to DC voltage converter if applicable.

Determining the Correct System

To determine if this **SIS** will meet your solar power requirements, first choose what DC voltage your system will operate on, then calculate the Total Equipment Load in Amp-hours per Day. Next, looking at the map of the U.S., determine your Solar Resource. Then, using the selection matrix on the following page, choose the appropriate system.

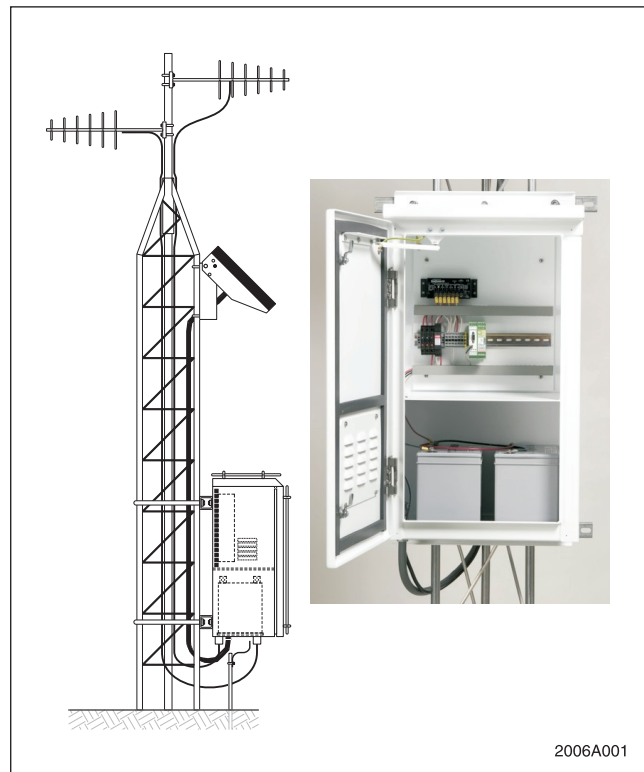
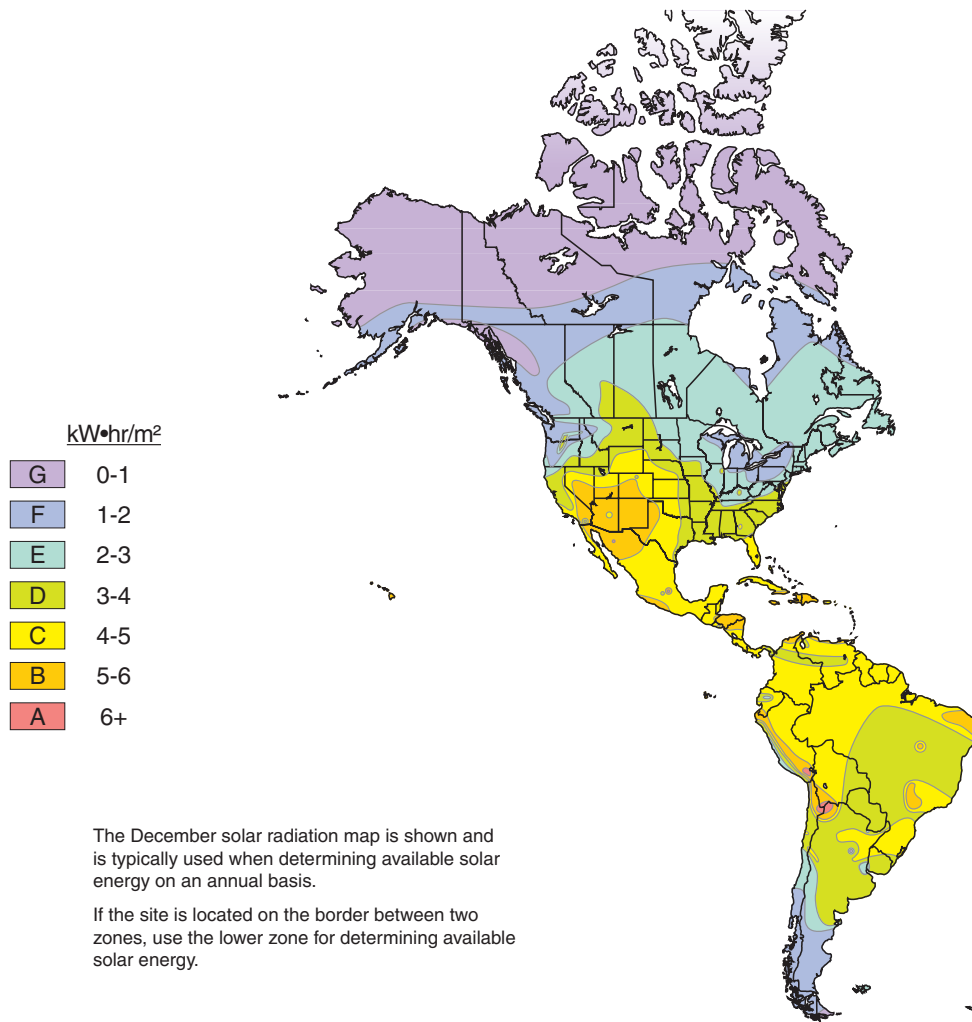


Figure 1. Solar Interface System

2006A001



Solar Interface Systems		Solar Insolation Zone				
		B	C	D	E	F
Part No.	Type	System Production in Amp•hr/day				
5605941	RAD-SOL-SET-24-40	4.70	3.78	2.84	1.90	0.95
5605942	RAD-SOL-SET-24-60	7.12	5.70	4.27	2.85	1.42
5606285	RAD-SOL-SET-24-80	9.45	7.56	5.70	3.80	1.90
5606943	RAD-SOL-SET-24-100	12.00	9.60	7.20	4.80	2.40

([Transmit Time (sec/hr) ÷ 3600] x amps) + additional load (amps) x 24 hrs = Total amp•hr/day

An online system calculator is available on the Wireless Interface page at:

<http://www.phoenixcon.com/wireless>

Additional configurations are available upon request. Contact Technical Service for system sizes and availability.

Canada

The information given herein is based on data believed to be reliable, but Phoenix Contact makes no warranties expressed or implied as to its accuracy and assumes no liability arising out of its use by others. This publication is not to be taken as a license to operate under, or recommendation to infringe, any patent.

PHOENIX CONTACT Ltd.
 235 Watline Avenue
 Mississauga, Ontario L4Z 1P3
 Phone: 905-890-2820
 Technical Service: 800-890-2820
 Fax: 905-890-0180
 Website: www.phoenixcontact.ca

USA

PHOENIX CONTACT
 P.O. Box 4100
 Harrisburg, PA 17111-0100
 Phone: 800-888-7388
 Technical Service: 800-322-3225
 Fax: 717-944-1625
 E-mail: info@phoenixcon.com
 Website: www.phoenixcon.com